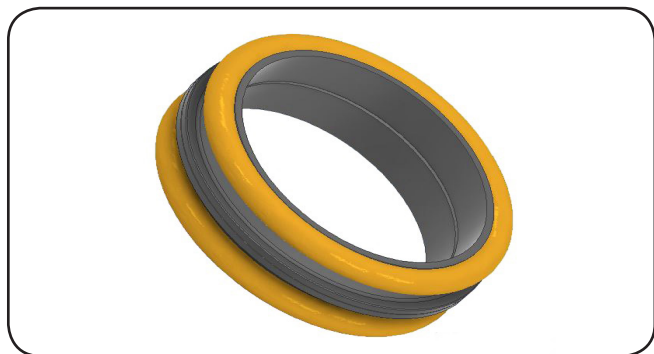
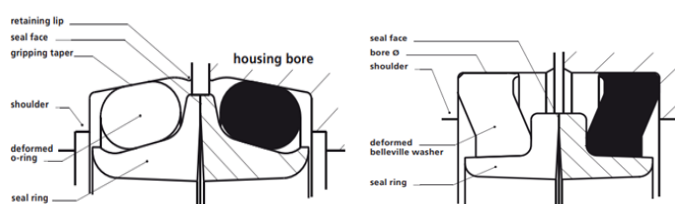


JE



MECHANICAL FACE SEALS DO and DF



DO

DF

COMPOSITION

Mirror seals are manufactured from high-alloy cast iron that is corrosion-resistant. Immediately after casting, a natural hardness of 62 HRC is achieved, which is increased to a minimum of 69 HRC through heat treatment.

Alternatively, a more economical forged steel such as 1.3505 steel can also be used. Seals made from this material are manufactured by turning followed by induction hardening or salt bath hardening. The hardness ranges from 58 to 63 HRC.

In both cases, the sealing faces of these parts are lapped and polished.

As for the activating O-ring seal, the most common material is NBR 60SH, although upon request, we have other less common options such as HNBR and MVQ, both in 60SH.

SPECIFICATIONS

Mechanical face seals, also known as floating seals or mirror seals, are essential for rotary applications in industrial working environments where high wear resistance is required.

Mirror seals are designed to operate in hostile environments under extreme stresses from dust, sand, mud, stones, and dirt.

APPLICATIONS

Some of the applications where they can be found include:

- Excavators
- Conveyor systems
- Heavy-duty trucks
- Mining vehicles
- Agricultural machinery
- Tunnel boring machines

ACTIVATING SEAL

O-RING NBR -25°C / 90°C

O-RING HNBR -35°C / 120°C

O-RING Silicone: -50°C / 200°C

WORKING CONDITIONS

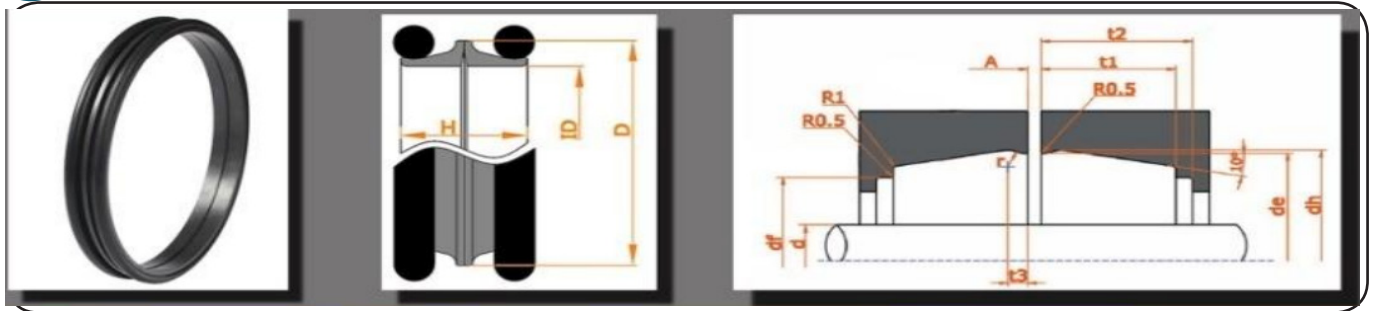
Load:

Mirror seals should not withstand pressure under normal working conditions, although they can withstand up to 0.3 MPa (3 bar) for the cast iron option and up to 0.15 MPa (1.5 bar) for 1.3505 steel.

With static load, it could reach up to 0.5 MPa (5 bar).

Speed:

The working speed ranges from 3 m/s for cast iron to 2.2 m/s for 1.3505 steel. In both situations, the mirror seals must be lubricated with oil.



Reference	Mechanical face seals				Housing dimensions							
	D	ID	H	Ød(max)	dh	de	df	t1	t2	t3	r	(+/-) tolerance
CAMESP0220	35	22	20	18	37.7	37	29	9	10.5	1.8	2	0.1
CAMESP0250	38	25	20	21	40.7	40	34	9	10.5	1.8	2	0.1
CAMESP0305	42.5	30.5	17.6	27	44.3	44	39.5	7.3	8.8	1.1	2	0.1
CAMESP0340	45	34	14	30	47	46.5	42	6.5	8	1	1	0.1
CAMESP0380	51	38	20	35	53.7	53	46	9	11	.8	2	0.1
CAMESP0381	51	38	20	35	53.7	53	46	10	11.5	1.8	23	0.1
CAMESP0435	58	43.5	24	39	61.6	61	52	11	13.5	2.8	5	0.1
CAMESP0450	58	45	21	41	61.6	60.8	53.4	10	12	1.8	2.5	0.1
CAMESP0451	59	45	26.8	41	62.3	61.5	53	13.5	15.5	2.7	2.8	0.1
CAMESP0460	60	46	24	42	64	63	54	141	13.5	2.8	5	0.1
CAMESP0461	59	46	20	42	62.5	61.8	56	8.5	10.5	1.8	2	0.1
CAMESP0480	62	48	25	45	68	67.2	58	12	14	2	3	0.1
CAMESP0481	58	48	14.4	45	59.9	59.4	55	6.3	8	1.5	1.7	0.1
CAMESP0485	62	48.5	18	45	64	63.5	59	7.6	8.8	1.1	2	0.1
CAMESP0510	65.6	51	26.8	47	68	67.2	62	13.5	15.5	2.7	2.8	0.1
CAMESP0540	68	54	24	51	72	71	60	11	13.5	2.8	5	0.1
CAMESP0550	67	55	18	52	69.1	68.6	64	7.3	8.8	1.1	2	0.1
CAMESP0551	66.5	55	20	52	72.8	72.1	60	8.5	10.5	1.8	2	0.1
CAMESP0555	70	55.5	22	52	73.8	73.1	65.5	10	11.5	2.4	5	0.1
CAMESP0556	70	55.5	22	52	74.8	74.1	66.5	10	11.5	2.4	5	0.1
CAMESP0560	70	56	25	53	76	75.2	66	12.5	14.5	2.	3	0.1
CAMESP0575	74	57.5	26	54.5	78	77	66	13	15	2	3	0.1
CAMESP0580	75	58	27	55	79.4	78.6	67	13.5	15.5	2	3	0.1
CAMESP0581	77.5	58	36	55	82.2	81.2	70	18	20.5	3.1	6	0.1
CAMESP0582	75.5	57.8	26	55	80	79.1	67	13	15	2.	3	0.1
CAMESP0600	74	60	20.6	57	78.4	77.4	70	9	11	1.9	2.5	0.1
CAMESP0602	73	60.2	20	57	76.5	75.8	69	8.5	10.5	1.8	2	0.1
CAMESP0610	83	61	30	58	85.2	84.2	75	14.5	17	2.8	5	0.15
CAMESP0611	73	61	17.6	58	75.8	75.5	66.8	6.5	7.5	1	1.4	0.1
CAMESP0620	73.2	62	17	58	76.7	76.1	70	8.2	9.2	2.3	1.5	0.1
CAMESP0621	73.5	62	16	58	76.7	76.1	70	8.2	9.2	2.3	1.5	0.1
CAMESP0630	80.5	63	26	60	84	83.2	72	11.5	13	2.5	5	0.1
CAMESP0635	82.5	63.5	31.8	60.5	86.8	86	74.5	14.5	17.5	2.8	5	0.1
CAMESP0640	78	64	25	61	84.6	84	74	12.5	14.5	2	3	0.1
CAMESP0641	76	64	17.6	61	78.8	78.5	71.5	7.3	8.8	1.1	2	0.1
CAMESP0660	86	66	28	63	90	89.2	78	13.5	15.5	2	3	0.1
CAMESP0661	85	66	26	63	90.5	89.5	77	13	15	2	3	0.1
CAMESP0670	80	67	20	64	83.4	82.7	76.8	8.5	10.5	1.8	2	0.1
CAMESP0675	86.5	67.5	31.8	64.5	91	90	78	14.5	17	2.8	5	0.15
CAMESP0685	89	68.5	24	65.5	92.5	91.5	83	11	13.5	2.8	5	0.1
CAMESP0690	84	69	24	66	89.6	88.6	78	11	13.5	2.8	5	0.1
CAMESP0700	90	70	28	66	95	94	84	13.5	15.5	2	3	0.1
CAMESP0701	87	70	21	66	91.8	90.8	84	9.2	10	2.3	3	0.1
CAMESP0702	84	70	20	66	86.5	85.7	55	9	11	1.8	2	0.1

Reference	Mechanical face seals				Housing dimensions							
	D	ID	H	Ød(max)	dh	de	df	t1	t2	t3	r	(+/-) tolerance
CAMESP0710	84	71	20	68	87.4	86.7	80.8	8.5	10.5	1.8	2	0.1
CAMESP0725	92	72.5	36	69	96.5	95.5	85	18	20.5	3.1	6	0.1
CAMESP0730	92	73	31.8	70	96.4	95.4	84	15	17	2.8	5	0.1
CAMESP0738	88	73.8	22	70.5	89.8	89.6	81	10	11.5	2	4	0.1
CAMESP0740	86.4	74	22	71	91.5	90.5	81	10	11.5	2	4	0.1
CAMESP0741	87	74	21	71	95	94	83	10	11.5	2	4	0.1
CAMESP0746	93	74.6	29	72	100.7	99.9	84	15	17	2.8	5	0.1
CAMESP0750	94.5	75	32	71	98	97	86	14.5	17	2.8	5	0.15
CAMESP0760	94	76	29	72	104.4	100.4	88	14.5	16.5	2	5	0.1
CAMESP0775	87.5	77.5	14	75.9	90.7	90.2	85.5	7	8	1.5	1.5	0.1
CAMESP0790	100	79	30	76	105.2	104.2	92	14.5	17	2.8	5	0.1
CAMESP0795	92.5	79.5	20	76.5	96	95.3	88	8.5	10.5	1.8	2	0.1
CAMESP0800	100	80	29	77	105	104	92	14.5	16.5	2	3	0.1
CAMESP0801	100	80	29	77	104	103.2	92	14.5	16.5	2	3	0.1
CAMESP0810	98	81	28	78	102.3	101.3	91	12.5	14.5	2.8	5	0.1
CAMESP0825	102	82.5	36	80	106.3	105.3	95	18	20.5	3.1	6	0.1
CAMESP0830	102	83	28	80	105.4	104.5	94	12.5	15	2.8	5	0.1
CAMESP0845	104.5	84.5	32	81	109	108	99	14.5	17	2.8	5	0.1
CAMESP0880	108	88	24	85	111.5	110.5	102	11	13.5	2.8	5	0.1
CAMESP0890	108	89	29	86	112	111	100	14.5	16.5	2	5	0.1
CAMESP0900	105	90	26	87	107.4	106.6	100.4	11.8	14.2	2.9	2.8	0.1
CAMESP0901	102	90	20	88.4	107.4	106.6	100	9	11	1.8	2	0.1
CAMESP0905	109	90.5	32	88.5	114	113	101.5	14.5	17.5	2.8	5	0.1
CAMESP0910	110	91	32	89	114	113	101.5	14.5	17.5	2.8	5	0.1
CAMESP0920	109	92	22	88	113.8	112.8	104	10	11.5	2	4	0.1
CAMESP0940	107	94	22	91	112	111	102	10	11.5	2	4	0.1
CAMESP0950	114	95	32	92	120	119	106	14.5	17	2.8	5	0.15
CAMESP0951	111	95	24	92	115.6	114.8	108	11	13	1.8	2	0.1
CAMESP0965	106.5	96.5	14	94.9	109.7	109.2	108.5	7	8	1.5	1.5	0.1
CAMESP0970	116	97	32	94	120.5	119.5	108	14.5	17	2.8	5	0.15
CAMESP0980	119	98	29.6	95	124.2	123.2	111	14.5	17	2.8	5	0.15
CAMESP0985	115	98.5	21.2	95	117.3	116.5	110	9	11	1.8	2	0.1
CAMESP0990	120	99	28	96	123.5	122.5	112	12.5	14.5	2.8	5	0.1
CAMESP1000	119	100	32	97	123.5	122.5	111	14.5	17	2.8	5	0.15
CAMESP1001	119	100	32	97	124	123	111	14.5	17	2.8	5	0.15
CAMESP1010	120	101	30	98	125	124	111	14.5	17	2.8	5	0.15
CAMESP1020	122	102	33	99	127.2	126.2	114	16.5	18.5	3.1	3	0.15
CAMESP1021	118	102	27	99	124	123	112	12	14.5	2.8	5	0.1
CAMESP1030	117	103	20	100	119.8	119	112.5	9	11	1.8	2	0.1
CAMESP1039	117.1	103.9	20	100	121	120.2	114	9	10.5	2	3	0.1
CAMESP1040	117	104	22	101	122	121	112.5	10	11.5	2	4	0.1
CAMESP1041	122	104	22	101	125.8	124.8	117	10	11.5	2	4	0.1
CAMESP1042	125	104	28	101	128.5	127.5	117	12.5	14	2.8	5	0.1
CAMESP1070	125	107	24	103	130.4	129.4	119.5	11	13.5	2.8	5	0.1
CAMESP1095	127		32	104	132.6	131.3	121	14.5	17	2.8	5	0.15
CAMESP1100	128	110	32	106	133	132	121	14.5	17	2.8	5	0.15
CAMESP1101	132	110	32	107	136.5	135.5	125	14.5	17	2.8	5	0.15
CAMESP1110	133	111	32	108	137	136	124.5	14.5	18	2.8	5	0.1

Reference	Mechanical face seals				Housing dimensions							
	D	ID	H	Ød(max)	dh	de	df	t1	t2	t3	r	(+/-) tolerance
CAMESP1120	132	112	31.8	110	136.3	135.3	124	15	17	2.8	5	0.15
CAMESP1145	129	114.5	21	11	134.1	133.1	126	9.2	10	2.3	3	0.1
CAMESP1150	137	115	31	112	141.8	140.8	130	14.5	16.5	2.8	3	0.1
CAMESP1170	140	117	29	114	142.5	141.5	132	13	14	2.8	5	0.15
CAMESP1171	138	117	32	115	142.5	141.5	132	14.5	17	2.8	5	0.1
CAMESP1180	138	118	32	115	143	142	132	14.5	17	2.8	5	0.1
CAMESP1200	142	120	38	116	149	148	133	17	19	3.1	6.5	0.15
CAMESP1201	139	120	32	116	143.8	142.8	132	14.5	17	2.8	5	0.15
CAMESP1202	138	120	32	117	143	142	132	14.5	17	2.8	5	0.1
CAMESP1235	143.5	123.5	29.4	120	148	147	137	12.5	13.5	2.8	5	0.1
CAMESP1240	141	14	22	120	146.4	145.3	136	10	11.5	2	4	0.1
CAMESP1250	144	125	31.8	121	148.5	147.5	136	14.5	17	2.8	5	0.15
CAMESP1270	140.7	127	25	124	144	143.2	135	12	14.5	2	3	0.1
CAMESP1271	146	127	32	124	150.5	149.5	138	14.5	17.5	2.8	5	0.15
CAMESP1272	141	127	29	124	148.2	147.2	135	13.2	15.5	2.8	5	0.15
CAMESP1273	141	127	29	124	144	143	136	12	14.5	2.3	3	0.1
CAMESP1300	150	130	32	125	156	155	144.6	14.5	17	2.8	5	0.15
CAMESP1301	151	130	32	125	156	155	144.6	14.5	17.5	2.8	5	0.15
CAMESP1302	152	130	38.4	125	159	158	142	18	20.5	3.1	6.5	0.20
CAMESP1303	150.1	130	32	125	156	155	144.6	14.5	17.5	2.8	5	0.15
CAMESP1320	152	132	30	129	156.2	155	144.6	12.5	14.5	2.5	3	0.1
CAMESP1355	154.5	135.5	28	132	158.3	157.3	146.5	12.5	14	2.8	5	0.15
CAMESP1360	155	136	30	132	159.7	158.7	145	14.5	17	2.8	5	0.15
CAMESP1370	153	137	30	132	161.7	160.7	143	14.5	17	2.8	5	0.15
CAMESP1400	155	140	26	137	158.6	157.6	147	13	15	2	3	0.1
CAMESP1420	160	142	33	139	166	165	152	16.5	18.5	3.1	3	0.2
CAMESP1430	157.01	143	25	139	160	159	152	12	14.5	2.3	3	0.1
CAMESP1431	160	143	27	138	164	163	154	12	141.5	2.8	5	0.1
CAMESP1432	157	143	27	138	160	159	152	12	14.5	2.3	3	0.1
CAMESP1440	157.05	144	26	138	160	159	152	12	14.5	2.3	3	0.1
CAMESP1460	168.1	146	38	143	177	176	159	18	20.5	3.1	6.5	0.15
CAMESP1461	172	146	38	143	177	176	159	18	20.5	3.1	6.5	0.15
CAMESP1462	175	146	38	143	180.5	179.5	168	17.5	20.5	3.1	6.5	0.20
CAMESP1470	167	147	28	143	171	170	160	13	15.5	2.8	5	0.15
CAMESP1500	172	150	40	146	176.3	175.5	165	18	20	2.5	3	0.15
CAMESP1501	171	150	32	146	175.6	174.6	164	14.5	17	2.8	5	0.15
CAMESP1502	172	150	40	146	179	178	165	18	20	2.5	3	0.15
CAMESP1503	167	150	28	146	171	170	160	12.5	14.5	2.8	5	0.1
CAMESP1504	172	150	39	146	176.5	175.5	165	18	20	2.5	3	0.15
CAMESP1530	171.5	153	28	150	176.3	175.3	164.5	12.5	14.5	2.8	5	0.1
CAMESP1535	172.5	153.5	32	150.5	178	177	166	14.5	17	2.8	5	0.15
CAMESP1539	168	153.9	26	151	171	170.2	163	12	14.5	2.3	3	0.1
CAMESP1540	168	154	27	151	171	170	163	12	14.5	2.3	3	0.1
CAMESP1541	169	154	22	151	174.5	173.5	166	10	11.5	2	4	0.1
CAMESP1542	170	154	21	151	175.1	174.1	167	9.2	11	2.3	3	0.1
CAMESP1543	173.5	154	32	151	178	177	166	14.5	17	2.8	5	0.15
CAMESP1544	173.5	154	32	151	179	178	167	14.5	17	2.8	5	0.15
CAMESP1545	178	154	34	151	181	180	171	18	20.5	3.1	6	0.2

Reference	Mechanical face seals				Housing dimensions							
	D	ID	H	Ød(max)	dh	de	df	t1	t2	t3	r	(+/-) tolerance
CAMESP1550	177	155	39	152	180	179	168	18	20	2.5	3	0.2
CAMESP1600	180	160	32	156	186.5	185.5	174	14.5	17	2.8	5	0.15
CAMESP1630	191	163	38	159	196.5	195.5	178.5	18	20.5	3.1	6.5	0.2
CAMESP1631	191	163	46	159	196.8	195.8	178.4	21	23.5	3.1	6.5	0.2
CAMESP1633	191.5	163	38	159	196.5	195.5	178.5	18	20.5	3.1	6.5	0.2
CAMESP1640	189	164	30	159	193.5	192.5	179	14.5	17	2.8	5	0.15
CAMESP1650	181	165	27	161	185	184	176.5	12	14.5	2.3	3	0.15
CAMESP1651	183	165	28	161	188	187	176	12.5	14.5	2.8	5	0.1
CAMESP1665	191.5	166.5	38	163	196.5	195.5	178.5	18	20.5	3.1	6.5	0.2
CAMESP1670	194	167	38	163	199	198	187	18	20.5	3.1	6.5	0.2
CAMESP1690	188.5	169	32	165	193.5	192.5	179	14.5	17	2.8	5	0.15
CAMESP1713	185.3	171.3	20	167	188	187.3	180	9	11	1.8	2	0.1
CAMESP1720	194.4	172	31.8	168	198.9	197.9	186	14.5	17	2.8	5	0.15
CAMESP1725	190	172.5	25.4	169	192.7	191.8	188	12.7	14.3	2.3	2.8	0.1
CAMESP1730	200	173	36	169	205.5	204.5	190.5	18	20.5	3.1	6	0.2
CAMESP1731	200	173	40	170	204.5	203.5	191	18	20.5	3.1	6.5	0.2
CAMESP1740	190	174	25.4	170	192.7	191.8	188	12.7	14.3	2.3	2.8	0.1
CAMESP1760	195	176	28	171	199.8	198.8	188	12.5	14.5	2.8	5	0.1
CAMESP1770	200	177	30	173	204.5	203.5	191	14.5	17	2.8	5	0.15
CAMESP1780	200	178	38	174	210.6	209.6	191	18	20.5	3.1	6.5	0.2
CAMESP1781	200	178	38	174	212	211	191	18	20.5	3.1	6.5	0.2
CAMESP1782	199	178	32	174	203.6	202.6	190	14.5	17	2.8	5	0.15
CAMESP1783	197.3	178	21.4	174	202.2	201.9	196	9.4	10.6	1.2	3	0.15
CAMESP1800	197.4	180	21.4	173	202.2	201.9	196	9.4	10.6	1.2	3	0.15
CAMESP1820	210.5	182	38	179	215.5	214.5	197.5	18	20.5	3.1	6.5	0.2
CAMESP1825	210.3	182.5	46	179	215.4	214.5	197.5	21	23.5	3.1	6.55	0.2
CAMESP1830	202	183	28	179	206	205	195	12.5	14.5	2.8	2.8	0.1
CAMESP1860	203	186	25.4	182	205.7	204.8	192	12.7	14.3	2.3	2.3	0.1
CAMESP1865	202.5	186.5	21.4	182	207	206	202	9.4	10.6	1.2	3	0.1
CAMESP1866	202.8	186.5	21.7	182	208	207	202	9.4	10.6	1.2	3	0.1
CAMESP1900	216	190	44	186	224	223	206.5	21	22.5	3.1	3	0.2
CAMESP1901	216.1	190	36	186	221	220	206	18	20.5	3.1	6	0.2
CAMESP1910	210	191	28	188	214	213	203	12.5	14.5	2.8	5	0.1
CAMESP1920	215	192	33	189	220.8	219.8	207	16.5	18.5	3.1	6	0.15
CAMESP1921	209	192	30	189	213.5	212.5	200	14.5	17	2.8	5	0.15
CAMESP1930	218	193	38	190	225	224	208	18	20.5	3.1	6.5	0.2
CAMESP1950	216.5	195	31.8	191	221	220	207	14.5	17	2.8	5	0.15
CAMESP2000	228.5	200	38	196	233.5	232.5	215.5	18	20.5	3.1	6.5	0.2
CAMESP2010	222.3	201	26.5	197	226.9	226.1	218	11.8	14.2	2.2	2.5	0.1
CAMESP2020	222.3	202	26.5	197	224.9	224.1	217.9	11.8	14.2	2.2	2.5	0.1
CAMESP2040	222.5	204	26	206	225.4	224.4	217	11.5	13.5	2.2	2.5	0.1
CAMESP2050	227	205	30	201	231.5	230.3	219	14.5	17	2.8	5	0.1
CAMESP2070	227.5	207	32	203	231.3	224.4	219	14.5	17.5	2.8	5	0.1
CAMESP2085	222.8	208.5	26	206	225.4	241.6	217	11.5	13.5	2.2	2.5	0.1
CAMESP2090	234	209	42	206	242.6	241.6	224	19.5	21.5	3	4	0.15
CAMESP2100	240	210	40	207	246.4	245.4	228	18	20.5	3.1	6.5	0.2
CAMESP2160	237	216	30	212	241.5	240.5	229	14.5	17	2.8	5	0.15
CAMESP2170	240	217	36	213	244	243	228	18	20.5	3.1	6	0.20

Reference	Mechanical face seals				Housing dimensions							
	D	ID	H	Ød(max)	dh	de	df	t1	t2	t3	r	(+/-) tolerance
CAMESP2180	246	218	38	214	215	250	239	17.5	20.5	3.1	6.5	0.2
CAMESP2190	245	219	32	215	250.9	249.9	238.4	14.5	18	2.8	5	0.1
CAMESP2201	246	220	41	216	254.6	253.6	236	20.5	22.5	3	4	0.2
CAMESP2203	241.2	220	25	216	244.7	244	233.9	11	13.5	2.2	4	0.1
CAMESP2204	239.5	220	31.8	216	244	243	232	14.5	17	2.8	5	0.15
CAMESP2220	246	222	36	218	251.6	250.6	236.5	18	20.5	3.1	6	0.2
CAMESP2230	251.4	223	38	219	256.5	255.5	238.5	18	20.5	3.1	6.5	0.2
CAMESP2235	252	223.5	46	220	257	255.9	238.9	21	23.5	3.1	6.5	0.2
CAMESP2260	253	226	38	223	258	257	241	18	20.5	3.1	6.5	0.2
CAMESP2265	251.6	226.5	38	222	256.5	255.5	238.5	18	20.5	3.1	6.5	0.2
CAMESP2320	260	232	36	228	265	264	250	18	20.5	3.1	6	0.2
CAMESP2321	259.5	232	38	228	264.7	263.7	247	18	20.5	3.1	6	0.2
CAMESP2340	260	234	36	230	265	264	250	18	20.5	3.1	6	0.2
CAMESP2350	259.5	235	38	231	264.7	263.7	247	18	20.5	3.1	6	0.2
CAMESP2360	266	236	42	233	275	274	256	19.5	21.5	3	4	0.15
CAMESP2380	261	238	32	234	265.5	264.5	254	14.5	17	2.8	5	0.15
CAMESP2390	268	239	40	235	274.2	273.2	257	18	20.5	3.1	6.5	0.15
CAMESP2400	262.8	240	38	236	273.5	272.5	255.5	18	20.5	3.1	6.5	0.2
CAMESP2401	268.5	240	38	236	273.5	272.5	255.5	18	20.5	3.1	6.5	0.2
CAMESP2402	268.5	240	38	236	272	270	255.5	19	21.5	3.1	6.5	0.2
CAMESP2410	273	241	40	237	278	277	266	19	21.5	3.1	6.5	0.2
CAMESP2420	262.5	242	40	239	279.5	272.5	255.5	18	20.5	3.1	6.5	0.2
CAMESP2450	264.5	245	32	241	269	268	257	14.5	17	2.8	5	0.15
CAMESP2500	276	250	44	246	284.6	283.6	266	20.5	22.5	3.1	6.5	0.2
CAMESP2501	270	250	30	246	274.7	273.7	262	14.5	17	2.8	5	0.2
CAMESP2520	280	252	38	249	285.5	284.5	267.5	18.5	20.5	3.1	6.5	0.2
CAMESP2600	288	260	40	254	294	293	276	18.5	20.5	3.1	6.5	0.2
CAMESP2620	290	262	38	260	298	297	280	18	20.5	3.1	6.5	0.2
CAMESP2650	292.8	265	46	261	298	297	280	21	23.5	3.1	6.5	0.2
CAMESP2652	293	265	38	261	298	297	280	18	20.5	3.1	6.5	0.2
CAMESP2653	294	265	38	261	299	298	280	18	20.5	3.1	6.5	0.2
CAMESP2680	293	268	38	265	298	297	280	18	20.5	3.1	6.5	0.2
CAMESP2720	300	272	40	268	304	303	286	18	20.5	3.1	6.5	0.2
CAMESP2740	300	274	40	268	305	304	286	18	20.5	3.1	6.5	0.2
CAMESP2741	300	274	40	268	306	305	286	18	20.5	3.1	6.5	0.2
CAMESP2750	303	275	38	271	308	307	290	18	20.5	3.1	6.5	0.2
CAMESP2770	310	277	38	273	315.5	314.5	303	17.5	20.5	3.1	6.5	0.2
CAMESP2825	310.8	282.5	38	279	316.3	315.4	298	18	20.5	3.1	6.5	0.2
CAMESP2900	314	290	40	287	325	324	305	18	20.5	3.1	6.5	0.2
CAMESP2940	327	294	42	290	333.2	332.2	315	19	21.5	3.1	6.5	0.2
CAMESP2980	328	298	40	295	332.5	331.5	315	19	21.5	3.1	6.5	0.2
CAMESP3000	328	300	40	295	333	332	315	19	21.5	3.1	6.5	0.2
CAMESP3001	330	300	41	295	338	337	318	19.5	22	3.1	6.5	0.2
CAMESP3002	325	300	38	295	335.5	334.5	318	17.5	20.5	3.1	6.5	0.2
CAMESP3090	337	309	40	304	341	340	325	19	21.5	3.1	6.5	0.2
CAMESP3180	341	318	38	315.5	351.5	350.5	334	18	20.5	3.1	6.5	0.2
CAMESP3181	346	318	38	315.5	351.5	350.5	334	18	20.5	3.1	6.5	0.2
CAMESP3185	346	318.5	46	315.5	351.5	350.5	334	21.5	23.5	3.1	6.5	0.2

Reference	Mechanical face seals				Housing dimensions							
	D	ID	H	Ød(max)	dh	de	df	t1	t2	t3	r	(+/-) tolerance
CAMESP3200	348	320	40	316	354	353	338	19	21.5	3.1	6.5	0.2
CAMESP3220	346	322	46	320	351.5	350.5	334	21.5	23.5	3.1	6.5	0.2
CAMESP3250	353.8	325	30	320	358.8	357.8	346	14.5	17	2.8	5	0.2
CAMESP3360	368	336	40	330	374.8	373.8	358	19	21.5	3.1	6.5	0.2
CAMESP3395	368	339.5	40	335	374.8	373.8	358	19	21.5	3.1	6.5	0.2
CAMESP3400	370	340	40.4	335	375.7	374.7	358	19	21.5	3.1	6.5	0.2
CAMESP3500	376	350	44	345	386	385	368	20.5	22.5	3.1	6.5	0.2
CAMESP3501	375	350	38	345	385.5	384.5	368	17.5	20.5	3.1	6.5	0.2
CAMESP3550	375	355	38	350	385.5	384.5	368	17.5	20.5	3.1	6.5	0.2
CAMESP3560	381	356	38	351	388.5	387.5	370	17.5	20.5	3.1	6.5	0.2
CAMESP3650	394	365	38	361	400	399	381	17.5	20.5	3	6.5	0.25
CAMESP3660	394.4	366	38	361	399.5	398.6	381	17.5	20.5	3	6.5	0.25
CAMESP3690	394	369	38	365	399.5	398.6	381	17.5	20.5	3	6.5	0.25
CAMESP3700	398	370	38	365	403.5	402.6	385	17.5	20.5	3	6.5	0.25
CAMESP3805	405	380.5	40	375	412.2	410.5	395	19	21.5	3.1	6.5	0.25
CAMESP3810	405	381	40.8	376	415	414	393	19	21.5	3.1	6.5	0.2
CAMESP3820	410	382	42	378	415.4	414	400	19.5	21.5	3	6.5	0.15
CAMESP3870	415	387	38	382	419.5	418.6	402	17.5	20.5	3	6.5	0.25
CAMESP3871	415	387	38	382	420.3	419.4	402	17.5	20.5	3	6.5	0.25
CAMESP3880	417	388	38	383	423.5	422.5	402	17.5	20.5	3	6.5	0.25
CAMESP3980	426	398	38	393	431.6	430.6	412	17.5	20.5	3	6.5	0.25
CAMESP4070	436	407	38	404	442.5	441.5	424	17.5	20.5	3	6.5	0.25
CAMESP4240	454	424	42	420	451	460	444	19.5	21.5	3	6.5	0.15
CAMESP4285	454	428.5	37	425	462.3	461.3	444	18	21	3	6.5	0.25
CAMESP4290	457	429	38	426	462.3	461.3	444	17.5	20.5	3	6.5	0.25
CAMESP4300	457	429	38	426	463.5	462.5	444	17.5	20.5	3	6.5	0.25
CAMESP4450	447.3	445	38	440	478.3	477.3	460	17.5	20.5	3	6.5	0.25
CAMESP4480	482.5	448	40	443	486.3	484.3	470	19	21.5	3.1	6.5	0.25
CAMESP4500	480	450	50	445	492.2	490.2	470	23.5	25.5	4	6.5	0.25
CAMESP4600	494	460	60	455	504.2	503.2	484	23.8	25.2	4.7	6.5	0.4
CAMESP4650	495	465	44	460	500.7	498.5	482.9	21.2	22.9	4.7	6.5	0.25
CAMESP4651	497	465	44	460	503.1	500.9	482.9	21.2	23	4.7	6.5	0.25
CAMESP4700	500	470	50	465	512.2	510.2	490	23.5	25.5	4	6.5	0.25
CAMESP5050	533.4	505	44	502	538.4	537.4	521	19.7	21.7	4	6.5	0.25
CAMESP5051	535	505	44	503	541.8	539.7	521	19.7	21.7	4.2	6.5	0.25
CAMESP5080	548	508	60	501	553	551.5	528	22	26	5	6.5	0.25
CAMESP5300	560	530	50	524	572.2	570.2	545	23.5	25.5	4	6.5	0.25
CAMESP5380	567	538	44	532	573.1	572.1	555	19.7	21.7	4	6.5	0.25
CAMESP5590	590	559	50	554	602.2	600.2	575	23.5	25.5	4	6.5	0.25
CAMESP5591	590	559	48	554	602.2	600.2	575	20	23	4	6.5	0.4
CAMESP5800	608	581	44	576	613	612	596	19.7	21.7	4	6.5	0.25
CAMESP5910	623	591	50	586	635.2	633.2	613	23.5	25.5	4	6.5	0.4
CAMESP5960	628	596	50	591	640.2	638.2	618	23.5	25.5	4	6.5	0.4
CAMESP6200	650	620	50	615	662.2	660.2	635	23.5	25.5	4	6.5	0.4
CAMESP6600	690	660	50	650	705.3	703.3	680	20	22.5	4	6.5	0.4
CAMESP6670	700	667	44	660	705.6	704.3	687	21.3	24	3.7	6.5	0.25
CAMESP7180	750	718	50	710	762.2	760.2	740	23.5	25.5	4	6.5	0.4
CAMESP7370	768	737	50	730	784	782	750	24	26	4	6.5	0.4

Reference	Mechanical face seals				Housing dimensions							
	D	ID	H	Ød(max)	dh	de	df	t1	t2	t3	r	(+/-) tolerance
CAMESP7380	770	738	50	730	782	780	760	24	26	4	6	0.4
CAMESP7700	825	770	80	760	831.9	830.9	800	34.5	39.5	4.4	10	0.4
CAMESP7800	835	780	80	770	841.9	840.9	810	34.5	39.5	4.4	10	0.4
CAMESP8300	885	830	80	820	891.9	890.9	860	34.5	39.5	4.5	10	0.4
CAMESP8310	865	831	44	830	870.6	869.7	852.7	21.3	26.2	3.8	6.3	0.15
CAMESP9020	940	902	60	892	946.3	945.2	922.4	23.8	25.5	4.7	8	0.4
CAMESP9200	975	920	80	910	981.9	980.9	950	34.5	39.5	4.4	10	0.4
CAMESP10300	1082	1030	80	1010	1090.9	1089.9	1058	34.5	39.5	4.4	10	0.4
CAMESP10460	1102	1046	80	1028	1110.9	1109	1078	34.5	39.5	4.4	10	0.4
CAMESP11750	1233	1175	80	1155	1241.9	1240.4	1209	32.5	37.5	4.4	10	0.4
CAMESP13720	1422	1372	80	1352	1430.9	1429.9	1398	32.5	37.5	4.4	10	0.4