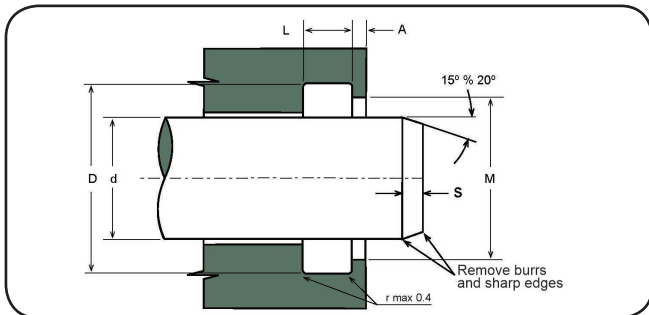


ROD WIPER WITH LIP



MAIN FEATURES

The RP2 type wiper is designed to prevent dust, dirt and foreign material from entering the sealing system. This is achieved by a special wiper lip that produces an effective cleaning action, preventing shaving build-up on the rod, protects the guide elements and extends the operating life of the seals.

The internal grooves of the wiper provide stability and prevent twisting of the part. This part is manufactured from a special polyurethane with an excellent property in case of dry movements, an excellent resistance to wear and tear and a high operating life as well as resistance to ozone and radiation caused by atmospheric agents.

- ° Outer lip to actually protect the sealing system.
- ° High operating life
- ° Cost-effective solution
- ° Excellent abrasion resistance
- ° Easy installation

RP1

DESCRIPTION

Rod wiper with external sealing lip

SEAL MATERIAL

Polyurethane. 93 °Shores

OPERATING CONDITIONS

Speed: < 0.8 m/seg.
Temperature: - 40 a + 100°C

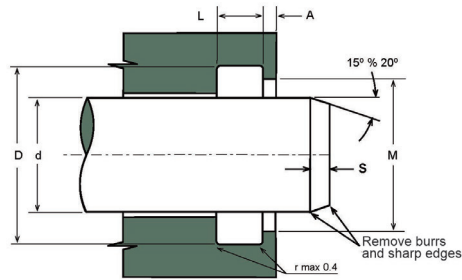
Fluid: Hydraulic oil
(mineral based)
(For other fluids, please contact our technical department)

Surface Roughness:
Dynamic surface La dada por la junta
Static surface Ra < 1.6 µm Rt < 6.3 µm

Acceptance chamfer

D	S minimum
° Less than 100 5 mm	5 mm
° From 100 to 200 7 mm	7 mm
° more than 200 10 mm	10 mm

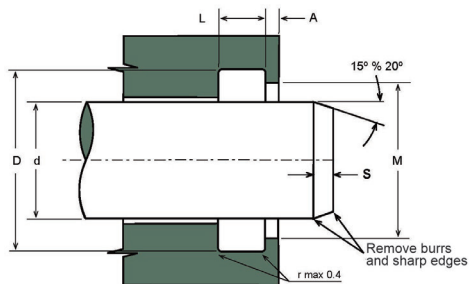
RP1



Type	Øint.	ØExt.	Ht.1	df7	DH10	L +0.20	M+0.2
RP1	4.00	12.00	3.00	4.00	12.00	3.00	9
RP1	5.00	12.00	2.80	5.00	12.00	2.80	9
RP1	6.00	12.00	3.00	6.00	12.00	3.00	9
RP1	8.00	14.60	3.80	8.00	14.60	3.80	11
RP1	9.00	13.00	2.50	9.00	13.00	2.50	12
RP1	10.00	16.60	3.80	10.00	16.60	3.80	14
RP1	10.00	15.00	1.00	10.00	15.00	1.00	13
RP1	12.00	18.60	3.80	12.00	18.60	3.80	15
RP1	13.00	19.60	3.80	13.00	19.60	3.80	16
RP1	14.00	20.60	3.80	14.00	20.60	3.80	17
RP1	15.00	21.60	3.80	15.00	21.60	3.80	18
RP1	16.00	22.60	3.80	16.00	22.60	3.80	19
RP1	16.00	22.50	3.00	16.00	22.50	3.00	19
RP1	17.00	23.60	3.80	17.00	23.60	3.80	20
RP1	18.00	24.60	3.80	18.00	24.60	3.80	21
RP1	20.00	28.60	5.30	20.00	28.60	5.30	23
RP1	20.00	26.00	3.40	20.00	26.00	3.40	23
RP1	22.00	30.60	5.30	22.00	30.60	5.30	25
RP1	22.00	30.60	2.20	22.00	30.60	2.20	25
RP1	24.00	32.60	5.30	24.00	32.60	5.30	27
RP1	24.00	32.60	2.20	24.00	32.60	2.20	27
RP1	25.00	33.60	5.30	25.00	33.60	5.30	28
RP1	25.00	32.50	1.60	25.00	32.50	1.60	28
RP1	28.00	36.60	5.30	28.00	36.60	5.30	31
RP1	30.00	38.60	5.30	30.00	38.60	5.30	33
RP1	30.00	40.00	3.00	30.00	40.00	3.00	35
RP1	32.00	40.60	5.30	32.00	40.60	5.30	35
RP1	32.00	32.50	1.60	32.00	32.50	1.60	35
RP1	35.00	43.60	5.30	5.00	43.60	5.30	38
RP1	35.00	43.60	5.00	35.00	43.60	5.00	38
RP1	35.00	45.00	4.00	35.00	45.00	4.00	39
RP1	36.00	44.60	5.30	36.00	44.60	5.30	39
RP1	38.00	46.60	5.30	38.00	46.60	5.30	41
RP1	38.10	47.60	4.75	38.10	47.60	4.75	42
RP1	40.00	48.60	5.30	40.00	48.60	5.30	43
RP1	42.00	50.60	5.30	42.00	50.60	5.30	45
RP1	45.00	53.60	5.30	45.00	53.60	5.30	48
RP1	45.00	55.60	5.30	45.00	55.60	5.30	48

Type	Øint.	ØExt.	Ht.1	df7	DH10	L +0.20	M+0.2
RP1	45.00	60.00	4.20	45.00	60.00	4.20	53
RP1	48.00	56.60	5.30	48.00	56.60	5.30	51
RP1	50.00	58.60	5.30	50.00	58.60	5.30	53
RP1	50.00	60.60	5.30	50.00	60.60	5.30	53
RP1	50.00	65.50	4.20	50.00	65.50	4.20	58
RP1	55.00	63.50	5.30	55.00	63.50	5.30	58
RP1	55.00	65.60	5.30	55.00	65.60	5.30	58
RP1	56.00	64.60	5.30	64.60	5.30	5.30	59
RP1	56.00	66.60	5.30	56.00	66.60	5.30	59
RP1	60.00	68.60	5.30	60.00	68.60	5.30	63
RP1	60.00	70.60	5.30	60.00	70.60	5.30	63
RP1	60.00	70.60	5.50	60.00	70.60	5.50	66
RP1	63.00	71.60	5.30	63.00	71.60	5.30	66
RP1	63.00	73.60	5.30	63.00	73.60	5.30	66
RP1	65.00	73.60	5.30	65.00	73.60	5.30	68
RP1	65.00	75.60	5.30	65.00	75.60	5.30	68
RP1	70.00	78.60	5.30	70.00	78.60	5.30	73
RP1	70.00	82.60	7.10	70.00	82.60	7.10	76
RP1	70.00	80.60	5.30	70.00	80.60	5.30	73
RP1	73.00	83.60	7.30	73.00	83.60	7.30	76
RP1	75.00	83.60	5.30	75.00	83.60	5.30	78
RP1	75.00	87.20	7.10	75.00	87.20	7.10	81
RP1	78.00	90.00	7.50	78.00	90.00	7.50	83
RP1	78.00	88.60	5.50	78.00	88.60	5.50	84
RP1	80.00	88.60	5.30	80.00	88.60	5.30	83
RP1	80.00	92.60	7.10	80.00	92.60	7.10	86
RP1	85.00	97.20	7.10	85.00	97.20	7.10	91
RP1	85.00	93.60	5.30	85.00	93.60	5.30	88
RP1	90.00	102.20	7.10	90.00	102.20	7.10	96
RP1	90.00	98.20	5.30	90.00	98.20	5.30	93
RP1	95.00	107.20	7.10	95.00	107.20	7.10	101
RP1	99.00	109.60	5.50	99.00	109.60	5.50	105
RP1	100.00	112.20	7.10	100.00	112.20	7.10	106
RP1	105.00	117.20	7.10	105.00	117.20	7.10	111
RP1	110.00	122.20	7.10	110.00	122.20	7.10	116
RP1	115.00	127.20	7.10	115.00	127.20	7.10	121
RP1	115.00	123.20	5.30	115.00	123.20	5.30	118
RP1	120.00	132.20	7.10	120.00	132.20	7.10	126

RP1



Type	Øint.	ØExt.	Ht.1	df7	DH10	L +0.20	M+0.2
RP1	120.00	130.60	5.50	120.00	130.60	5.50	126
RP1	125.00	137.20	7.10	125.00	137.20	7.10	131
RP1	130.00	142.20	7.10	130.00	142.20	7.10	136
RP1	135.00	147.20	7.10	135.00	147.20	7.10	141
RP1	140.00	152.20	7.10	140.00	152.20	7.10	146
RP1	141.00	151.60	5.50	141.00	151.60	5.50	147
RP1	145.00	157.20	7.10	145.00	157.20	7.10	151
RP1	150.00	162.20	7.10	150.00	162.20	7.10	156
RP1	150.00	158.20	5.30	150.00	158.20	5.30	153
RP1	160.00	175.20	10.10	160.00	175.20	10.10	168
RP1	162.00	172.60	5.50	162.00	172.60	5.50	168
RP1	170.00	185.20	10.10	170.00	185.20	10.10	178

Type	Øint.	ØExt.	Ht.1	df7	DH10	L +0.20	M+0.2
RP1	180.00	195.20	10.10	180.00	195.20	10.10	188
RP1	183.00	193.60	5.50	183.00	193.60	5.50	189
RP1	190.00	205.20	10.10	190.00	205.20	10.10	198
RP1	190.00	210.00	10.10	190.00	210.00	10.10	200
RP1	200.00	215.20	10.10	200.00	215.20	10.10	208
RP1	207.00	217.60	5.50	207.00	217.60	5.50	213
RP1	210.00	225.20	10.10	210.00	225.20	10.10	218
RP1	220.00	235.20	10.10	220.00	235.20	10.10	228
RP1	230.00	245.20	10.10	230.00	245.20	10.10	238
RP1	240.00	255.20	10.10	240.00	255.20	10.10	248
RP1	250.00	265.20	10.10	250.00	265.20	10.10	258