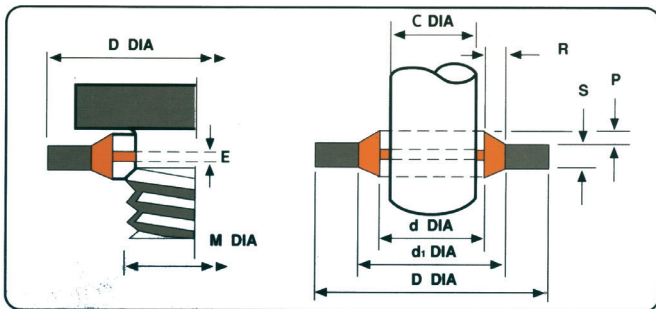


BONDED SEALS



MAIN FEATURES

The self-centring BONDED SEALS consist of a zinc-plated chrome-free steel washer (AISI 1008-1010) fitted with a trapezoidal section seal made of synthetic rubber, usually blue NBR 85 (+/- 5) IRHD adhered on the inside.

Upon request, we can supply:

- ° Various elastomers such as viton (FKM) or hydrogenated nitrile (HNBF1).
- ° Supporting washers in different materials such as stainless steel, brass, aluminium. All qualities of the self-centring BONDED SEAL make it an efficient, safe and cost-effective sealing device, providing a long-lasting solution to many problems.
- ° It is a simple and effective seal for aesthetic use, with mineral oils or gases.
- ° Use up to 700 BARS of pressure and on equipment subject to strong vibrations.
- ° Temperatures from - 30 °C to 110 °C.
- ° No special housing or machining required.
- ¢ Reduced torque.
- ° Recoverable after disassembly.
- ° Reduced machining, assembly and maintenance costs.
- ° Safe and leak-free.

BONDED SEAL

DESCRIPTION

BONDED SEALS

DYNAMIC SURFACE MATERIAL

NBR
FKM

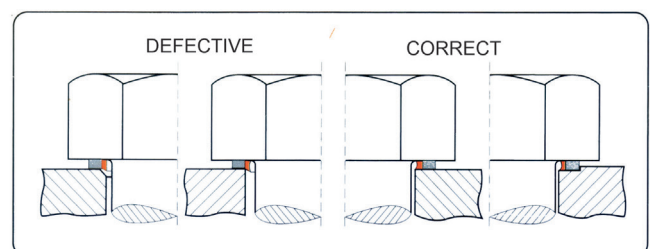
FLUIDS: Water, gas, mineral oils.
PRESSURE: Up to 700 B/-.
TEMPERATURE: From - 30 °C to 110 °C.

ASSEMBLY

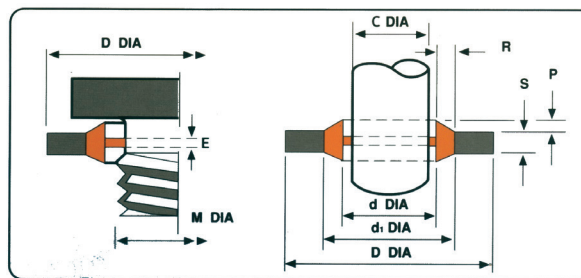
The self-centring BONDED SEAL does not require any special machining or housings. Countersinking can be useful in case of significant radial clearances. The steel washer limits pinching. In case of mounting in threaded holes, the separation between the screw thread and the seal should not exceed 0.25 mm.

OPERATION

As indicated in the sketch, the rubber seal deforms when pinched and transmits its reaction force to the metal part. The central lever positions the seal for perfect sealing. In installations subject to vibrations, the elastic part of the self-centring BONDED SEAL acts as a brake.



BONDED SEAL



Self-centring BSP bonded seal washers

Referen- ce	D	d +/-0.13	d1	S +/- 0.15	P	C +0.25/0.37	E	R	Burst Pressure (Bar)
A 1/8"	15.88	10.37	11.84			8.26			1500
A 1/4"	20.57	13.74	14.61	2		11.18			1550
A 3/8"	23.80	17.28	19.15			14.67			1260
A 1/2"	28.58	21.54	23.41			18.24			1150
A 5/8"	31.75	23.49	24.97			20.60			1250
A 3/4"	34.93	27.05	28.93	2.5	0.25/0.51	23.83	0.38/0.63	0.2	1060
A 7/8"	38.10	30.81	32.29			27.89			900
A 1"	42.80	33.89	37.28			29.92			810
A 1 1/4"	52.38	42.93	45.93			38.45			690
A 1 1/2"	58.60	48.44	51.39	3.25		44.45			690
A 2"	73.03	60.58	63.63			56.26			700

Self-Centring Metric Bonded Seal Washers

Referen- ce	D	d +/-0.13	d1	S +/- 0.15	P	C +0.25/0.37	E	R	Burst Pressure (Bar)
M04A	7.00	4.50	5.40			3.40			1400
M05A	9.00	5.70	6.80	0.9/1.1	0.3	4.50			1220
M06A	11.00	6.70	8.20			4.70			1510
M08A	13.00	8.70	10.00			6.40			1330
M10A	16.00	10.70	12.40			8.00			1350
M12A	18.00	12.70	14.40			9.80			1250
M14A	22.00	14.70	16.40	1.4/1.6		11.50			1510
M16A	24.00	16.70	18.40			13.50	0.38/0.63	0.2	1400
M18A	26.00	18.70	20.40			14.76			1275
M20A	28.00	20.70	22.50		0.4	16.76			1150
M22A	30.00	22.70	24.40			18.74			1100
M24A	32.00	24.70	26.40			20.11			1050
M26A	35.00	26.70	28.40	1.9/2.1		22.30			1050
M27A	36.00	27.20	29.00			23.80			1130
M30A	39.00	31.00	33.00			26.30			900