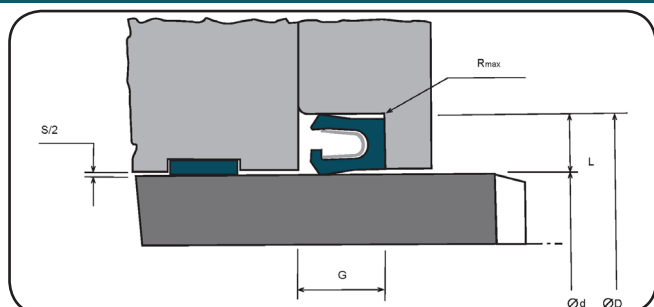


SINGLE-ACTING SEAL



MAIN FEATURES

FLEXI-C seals are PTFE seals with a design similar to a single-acting lip seal. Sealing is provided by the contact of the lips with the relevant surface. Radial force is achieved by the deformation of a corrosion-resistant U-shaped spring.

The metal spring provides the necessary sealing force at low pressures. Depending on the pressure increase, the sealing force is produced by the system's own pressure, ensuring the seal's tightness from zero to high pressures. The possibility of combining with other suitable seal and spring materials enables the use in a wide range of applications.

- Low friction and high abrasion resistance.
- Excellent performance with a wide variety of fluids.
- Smooth running in precision systems.
- Does not contaminate when in contact with food or drugs
- Long durability.
- Compact design.
- Compatible with most fluids.

FLEXI-C

DESCRIPTION

Single-acting seal rod

MATERIAL

PTFE + Compounds

Spring: Stainless steel AISI 301

OPERATING CONDITIONS

Speed: 15 m/sec. with reciprocating motions.

Pressure: > 350 bar.

Temperature: - 70 to + 260°C. (At higher temperatures, pressure and speed must be reduced)

TABLE OF MATERIALS

Compound	Composition	Properties	Operational field	Applications
22 44	Modified PTFE Carbon 25% Colour: black	Good chemical resistance. Good dry running properties. Works well on soft surfaces.	Speed up to 15m/sec. Pressures: Static up to 300 bar. Dynamic up to 200 bar Temperature: Static from -100 to +250°C. Dynamic from -40 to +225°C	Medium hardness work Non-lubricated systems Water. Pneumatic systems.
11 32	Virgin PTFE Colour: blue	Good chemical resistance. Very low friction. Limited wear resistance. Good dielectric properties.	Pressures Static up to 300 bar. Dynamic up to 200 bar. Temperature: Static from -100 to +250°C Dynamic from -40 to +225°C	Hydraulic systems. Medium hardness work.
Ultralem 90	Ultra high molecular weight Polyethylene Colour: white	Very good abrasion resistance. Good chemical resistance. Very good properties at low temperatures. Sensitive to high temperatures.	Speed up to 5m/sec. Pressures: Static up to 600 bar. Dynamic up to 500 bar. Temperature: Static from -150 to +90°C Dynamic from -150 to +80°C	Heavy work. Dry and lubricated pneumatic systems Chemical industry. Food.

SURFACE ROUGHNESS

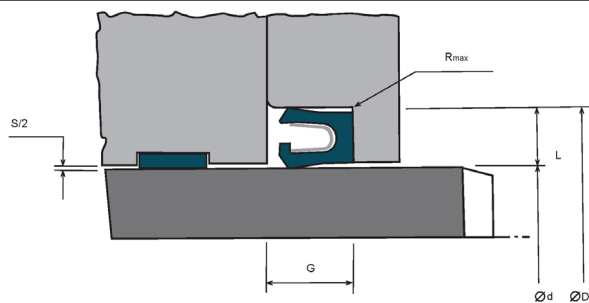
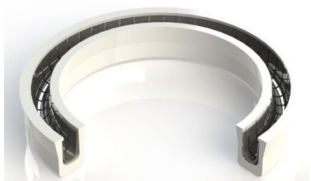
Dynamic surface $R_a < 0.3 \mu\text{m}$ $R_t < 2.5 \mu\text{m}$

Static surface $R_a < 1.6 \mu\text{m}$ $R_t < 6.3 \mu\text{m}$

ACCEPTANCE CHAMFER

D	S minimum
° Less than 100 5 mm	5 mm
° From 100 to 200 7 mm	7 mm
° more than 200 10 mm	10 mm

FLEXI-C



Standard series Internal rod Ød h9	External housing ØD H9	Housing height L	Housing width G ± 0.2	Maximum radius R	Radial clearance S max.		
					≥100 bar.	≥200 bar.	≥400 bar.
3.0 to 9.90	Ød + 2.9 ± 0.08	1.45	2.40 - 3.80	0.40	0.10	0.08	0.05
10.0 to 19.90	Ød + 4.5 ± 0.10	2.25	3.60 - 4.65	0.40	0.15	0.10	0.07
20.0 to 39.90	Ød + 6.2 ± 0.15	3.10	4.80 - 5.70	0.60	0.20	0.15	0.08
40.0 to 119.9	Ød + 9.4 ± 0.02	4.70	7.10 - 8.50	0.80	0.25	0.20	0.10
120.0 to 630.9	Ød + 12.2 ± 0.02	6.10	9.50	0.80	0.30	0.25	0.12

Type	Reference	Rod diameter Ø d h9	Housing Diameter Ø D H9	Housing width G ± 0.2
FLEXI	C-0030	3.00	5.90	2.40
FLEXI	C-0040	4.00	6.90	2.40
FLEXI	C-0050	5.00	7.90	2.40
FLEXI	C-0060	6.00	8.90	2.40
FLEXI	C-0080	8.00	10.90	2.40
FLEXI	C-0100	10.00	14.50	3.60
FLEXI	C-0120	12.00	16.50	3.60
FLEXI	C-0140	14.00	18.50	3.60
FLEXI	C-0150	15.00	19.50	3.60
FLEXI	C-0160	16.00	20.50	3.60
FLEXI	C-0180	18.00	22.50	3.60
FLEXI	C-0200	20.00	26.20	4.80
FLEXI	C-0220	22.00	28.20	4.80
FLEXI	C-0250	25.00	31.20	4.80
FLEXI	C-0280	28.00	34.20	4.80
FLEXI	C-0300	30.00	36.20	4.80
FLEXI	C-0320	32.00	38.20	4.80
FLEXI	C-0350	35.00	41.20	4.80
FLEXI	C-0360	36.00	42.20	4.80
FLEXI	C-0400	40.00	49.40	7.10
FLEXI	C-0420	42.00	51.40	7.10
FLEXI	C-0450	45.00	54.40	7.10
FLEXI	C-0480	48.00	57.40	7.10
FLEXI	C-0500	50.00	59.40	7.10
FLEXI	C-0520	52.00	61.40	7.10
FLEXI	C-0550	55.00	64.40	7.10
FLEXI	C-0560	56.00	65.40	7.10
FLEXI	C-0600	60.00	69.40	7.10
FLEXI	C-0630	63.00	72.40	7.10
FLEXI	C-0650	65.00	74.40	7.10
FLEXI	C-0700	70.00	79.40	7.10

Type	Referen- ce	Rod diameter Ø d h9	Housing Diameter Ø D H9	Housing width G ± 0.2
FLEXI	C-0750	75.00	84.40	7.10
FLEXI	C-0800	80.00	89.40	7.10
FLEXI	C-0850	85.00	94.40	7.10
FLEXI	C-0900	90.00	99.40	7.10
FLEXI	C-0950	95.00	104.40	7.10
FLEXI	C-1000	100.00	109.40	7.10
FLEXI	C-1050	105.00	114.40	7.10
FLEXI	C-1100	110.00	119.40	7.10
FLEXI	C-1150	115.00	124.40	7.10
FLEXI	C-1200	120.00	132.20	9.50
FLEXI	C-1250	125.00	137.20	9.50
FLEXI	C-1300	130.00	142.20	9.50
FLEXI	C-1350	135.00	147.20	9.50
FLEXI	C-1400	140.00	152.20	9.50
FLEXI	C-1500	150.00	162.20	9.50
FLEXI	C-1600	160.00	172.20	9.50
FLEXI	C-1700	170.00	182.20	9.50
FLEXI	C-1800	180.00	192.20	9.50
FLEXI	C-1900	190.00	202.20	9.50
FLEXI	C-2000	200.00	212.20	9.50
FLEXI	C-2100	210.00	222.20	9.50
FLEXI	C-2200	220.00	232.20	9.50
FLEXI	C-2300	230.00	242.20	9.50
FLEXI	C-2400	240.00	252.20	9.50
FLEXI	C-2500	250.00	262.20	9.50
FLEXI	C-2800	280.00	292.20	9.50
FLEXI	C-3000	300.00	312.20	9.50
FLEXI	C-3200	320.00	332.20	9.50
FLEXI	C-3500	350.00	362.20	9.50
FLEXI	C-3600	360.00	372.20	9.50
FLEXI	C-4000	400.00	412.20	9.50