



INTERSEAL, S.A.

OHIDRAULICA+ESTANQUEIDAD

Avda. Les Garrigues 17-19
Parque de Negocios Mas Blau II
08820 - PRAT DE LLOBREGAT
BARCELONA
ESPAÑA

Tlf.: +34933706711
Fax.: +34933701807
E-Mail : interseal@interseal.com

CATÁLOGO CENTRALES INTERSEAL

INT201119051230:

CENTRAL 25HP 380-660 DEP.CF300 BBA.43cc + NG10/4-LC2-B2-24VDC





INTERSEAL, S.A.

INT201110031700C:

CENTRAL S/MOTOR (PREDIS. 30CV) DEP.300L. BBA. LVP30 + 2024/380 + F/RET





INTERSEAL, S.A.

INT201107121700:
DEPÓSITO ESPECIAL





INTERSEAL, S.A.

INT201018011302:

CENTRAL 25CV BBA.112+17+17 PRENSA ROTATIVA





INTERSEAL, S.A.

INT201010011800:

CENTRAL 25 CV BBA. 112 + 22 + 17 PRENSA





INTERSEAL, S.A.

INT201007091830:

CENTRAL 2 MOTORES ATEX 5,5CV DEP. CFP180 BBAS. 4+4+4cc





INTERSEAL, S.A.

INT201004230900:

CENTRAL HIDRÁULICA DEP. 400 LTS 55 KW PVH098

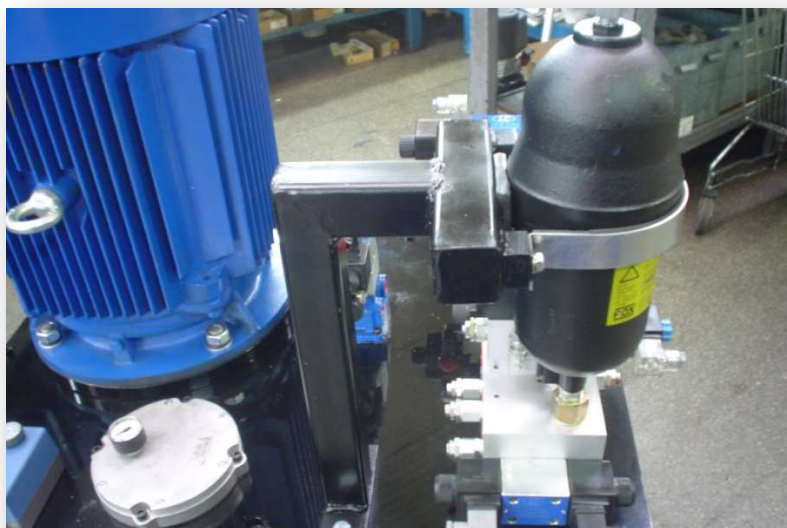




INTERSEAL, S.A.

INT200922121100:

CENTRAL 30CV BBA.51+16+6,3+4cc DEP.CF300





INTERSEAL, S.A.

INT200909281820-B:

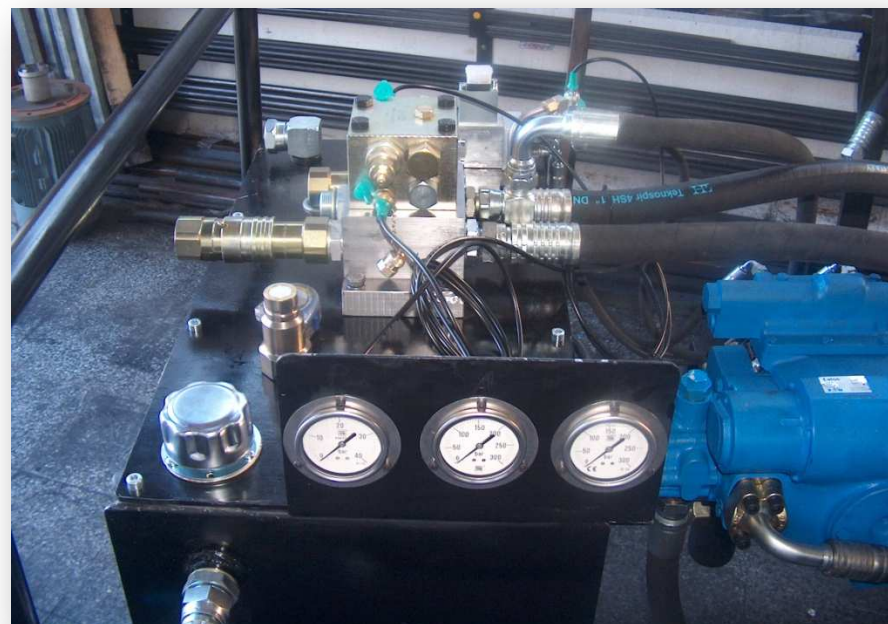
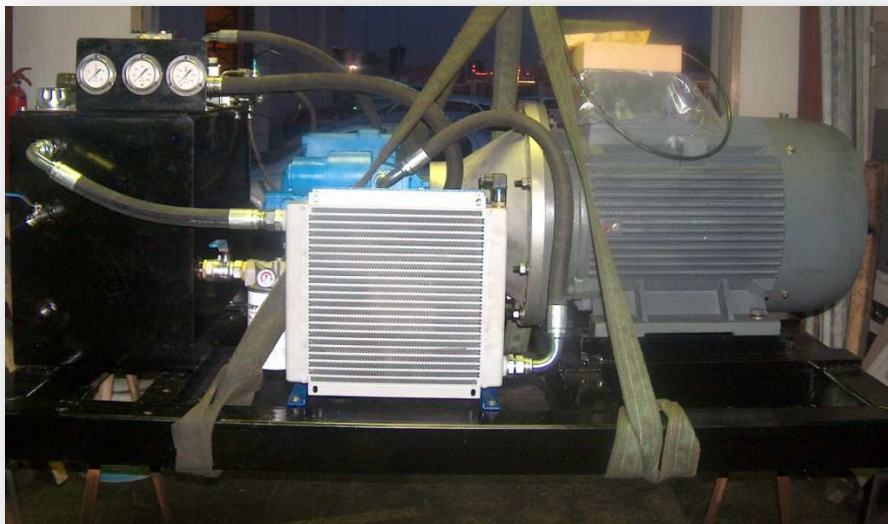
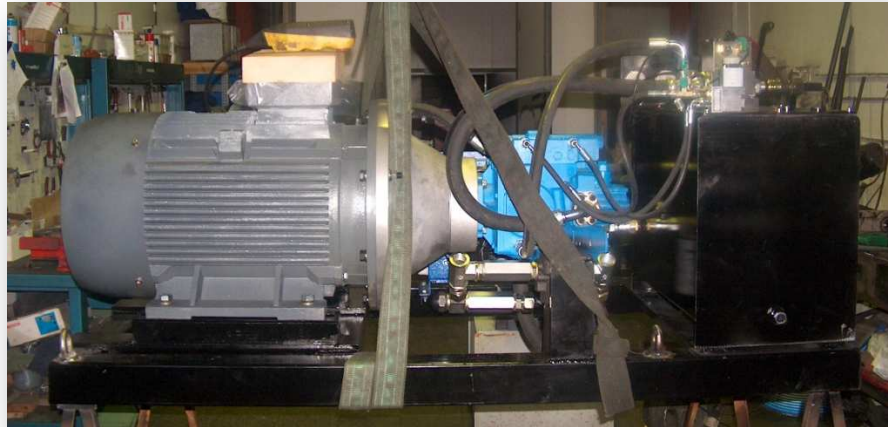
CENTRAL ESPECIAL BOMBA TRIPLE PLP20(16+4+4) CF180 ATEX





INTERSEAL, S.A.

INT200810031700:
CENTRAL 75HP ESPECIAL





INTERSEAL, S.A.

OIS201105040930:

CENTRAL 1,5CV TRIF. DEP..15L VERT. BBA.5,7cc + LC1-C2 + VF1-AB + VR-AB - 24VDC





INTERSEAL, S.A.

OIS201002061630:

CENTRAL 1,5 CV DEP.45LTS. BBA.7,9cc + NG6 + BLOQUE ACUMULADOR





INTERSEAL, S.A.

INT201402211800:

MOTOBOMBA MOTOR TRIF. 380660VAC 50HZ 40HP SIEMENS BBA.BAP32.40 Y BANCADA





INTERSEAL, S.A.

INT201406101600:

BLOQUE ACUMULADOR CENTRAL HIDRAULICA 2HP CON ACUMULADOR 35L INOX







INTERSEAL, S.A.





INTERSEAL, S.A.

INT201310150900:

CENTRAL HIDRAULICA PENSAS MOTOBOMBAS 60 HP+MOTOBOMBA 10 HP





INTERSEAL, S.A.

INT201412120930:

CENTRAL 2 MOTORES 22 KW DEP.600 LTS BBA MVP60.60

